

SS-WG  
**World Geography Midterm Revised**

[Exam ID:2W65PE] Scan Number:302

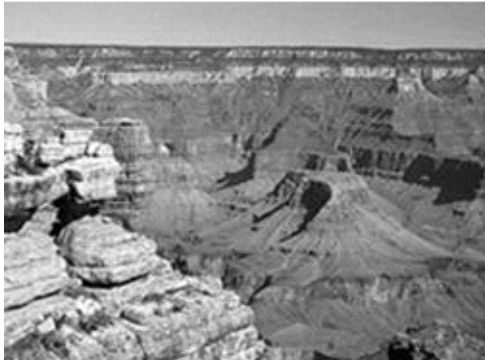
1



1



2



3



4

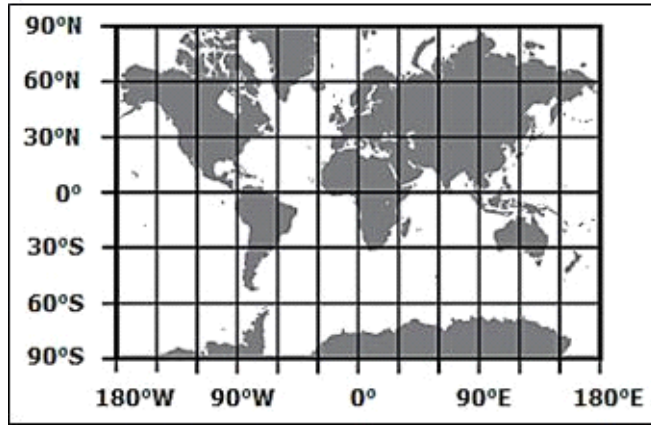
**Which image would most likely be used to display elevation of a large area?**

- A 2
- B 1
- C 3
- D 4



4

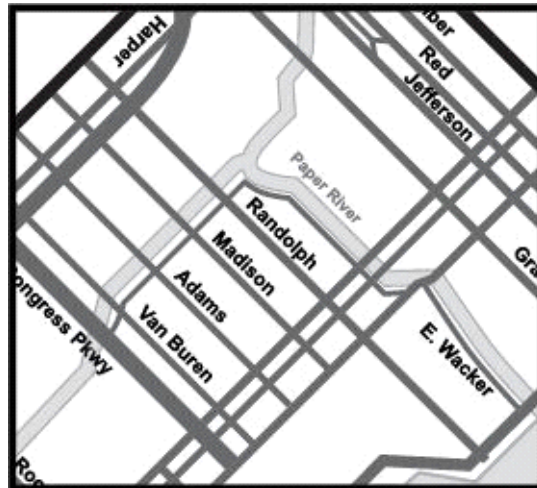
### The World



**Which location most likely has a tropical wet climate?**

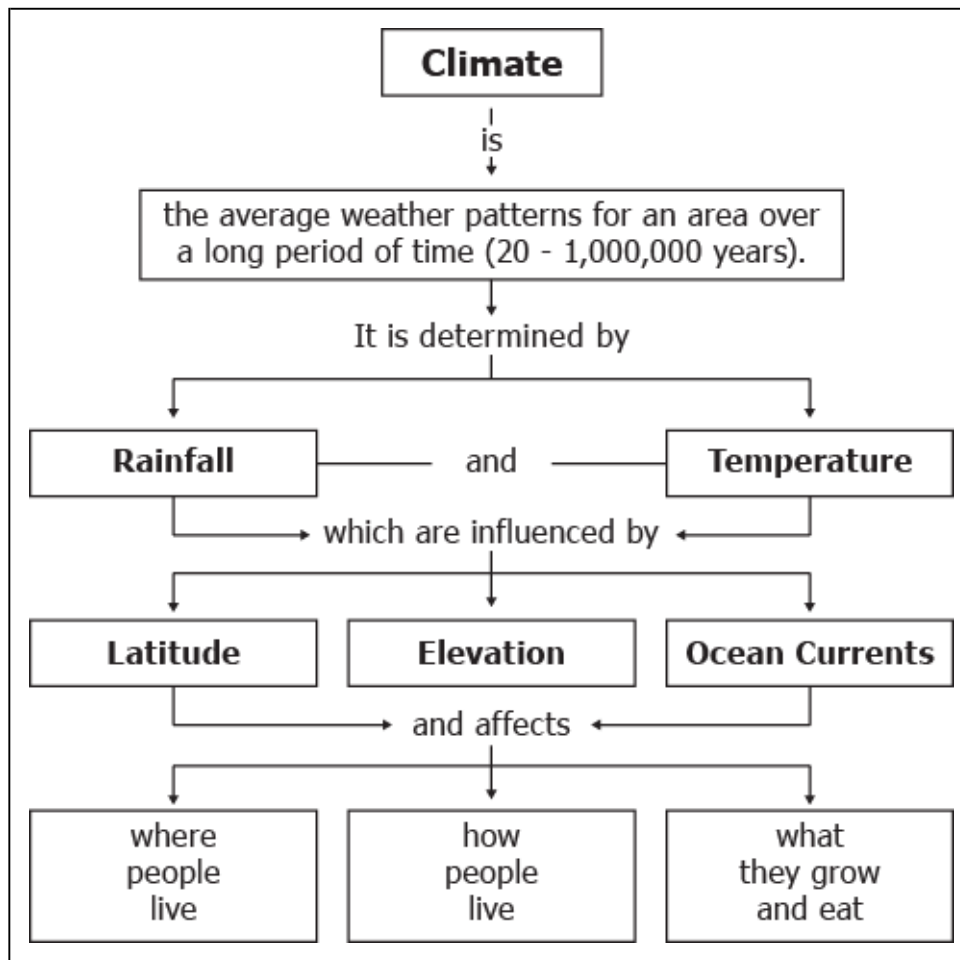
- A 50°N, 8°E
- B 35°S, 70°W
- C 1°S, 55°W
- D 79°N, 12°E

5



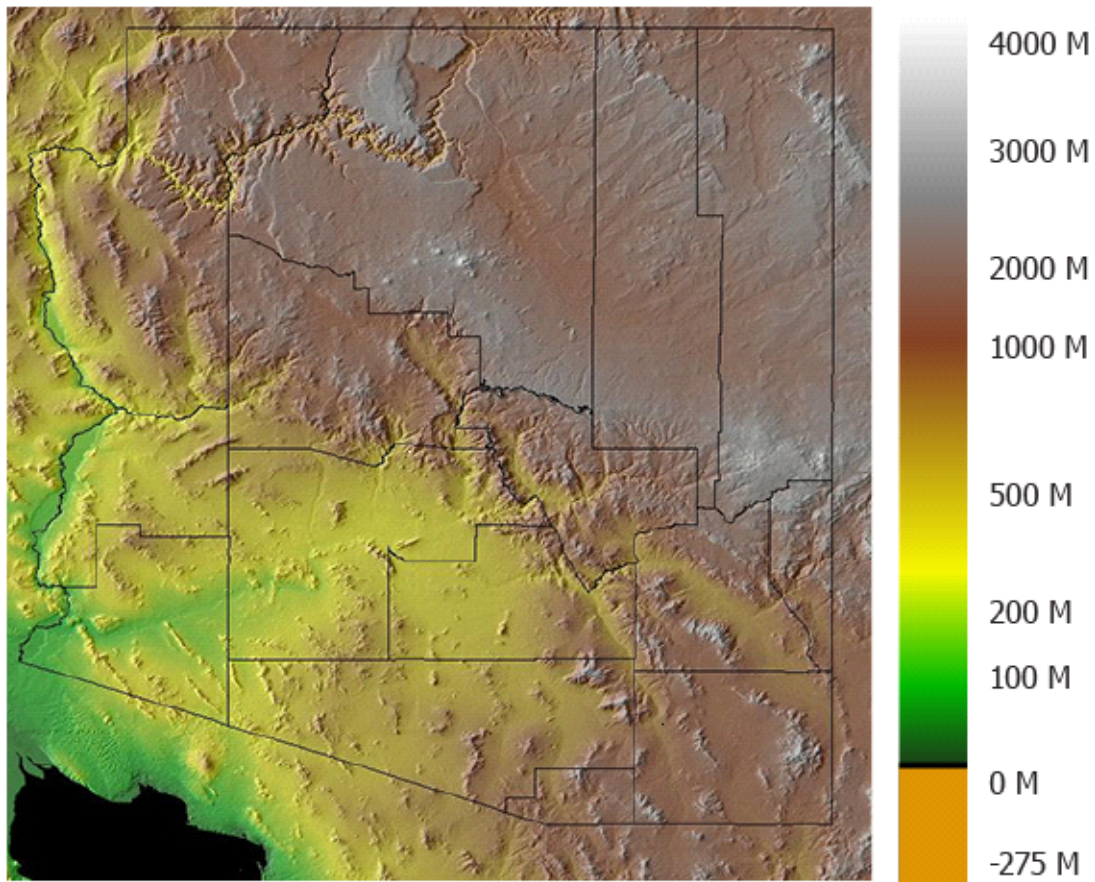
**What is one of the differences between these maps?**

- A Bordering states
- B Location
- C Scale
- D Orientation



**According to the flowchart, elements from which of Earth's physical systems affect climate?**

- A Lithosphere, Hydrosphere, and Biosphere
- B Atmosphere, Lithosphere, and Biosphere
- C Atmosphere, Lithosphere, Hydrosphere, and Biosphere
- D Atmosphere and Hydrosphere



M = meters above sea level

**Based on the information on the map, which conclusion about the types of climate zones in the map is displaying?**

- A** The Northwest most likely has a humid subtropical climate.
- B** The Southeast most likely has a tropical wet climate.
- C** The Southwest most likely has an arid climate.
- D** The Northeast most likely has a tundra climate.



8

Region	Description
1	Continuous belt of coniferous forest
2	Vast grassland that is largely treeless
3	Largest desert region in the world
4	Forest region with a heavy concentration of different species of broadleaf trees

**Which physical region best replaces 4 in the graphic?**

- A Rain forest
- B Taiga
- C Great Plains
- D Sahara

9



**Based on the map, which region of the world has the highest concentration of earthquake prone regions?**

- A Africa
- B Australia
- C North America
- D South America

**10 The greatest increase in global trade since 1950 has occurred in South Asia and Southeast Asia because of**

- A high-quality textiles.
- B highly educated immigrants.
- C renewable energy products.
- D labor-intensive exports.

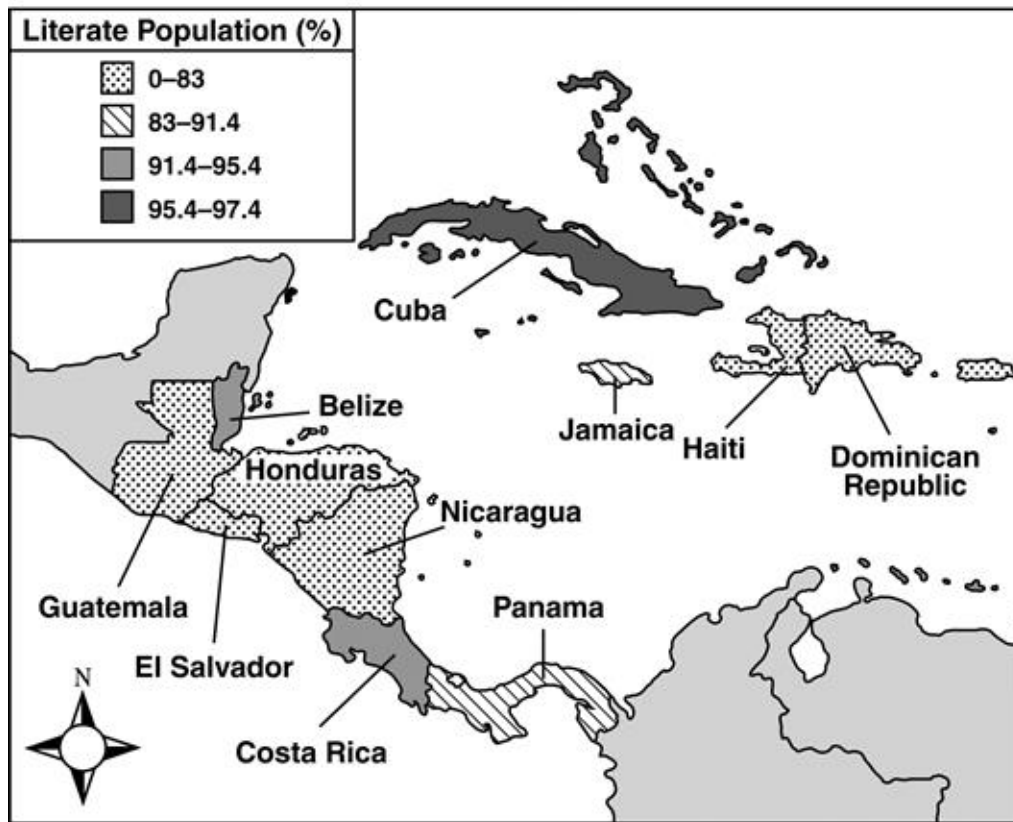


**Which physical characteristic explains why the orange shaded countries became members of ASEAN?**

- A They all border a central body of water.
- B They all share borders with at least one other member.
- C The majority of members have direct access to oceanic trade routes.
- D The majority of members have easy access to overland trade routes.

12 Use this map to complete the sentence.

Central America and Caribbean Islands  
Literate Populations, 2001



Source: Pan American Health Organization

**This map supports the conclusion that compared to neighboring countries, people in Cuba are MOST likely to**

- A travel extensively in the region.
- B have lower immunization rates.
- C own their own businesses.
- D complete their high school education.

13 **What was the biggest impact the Columbian Exchange had on the Native American people?**

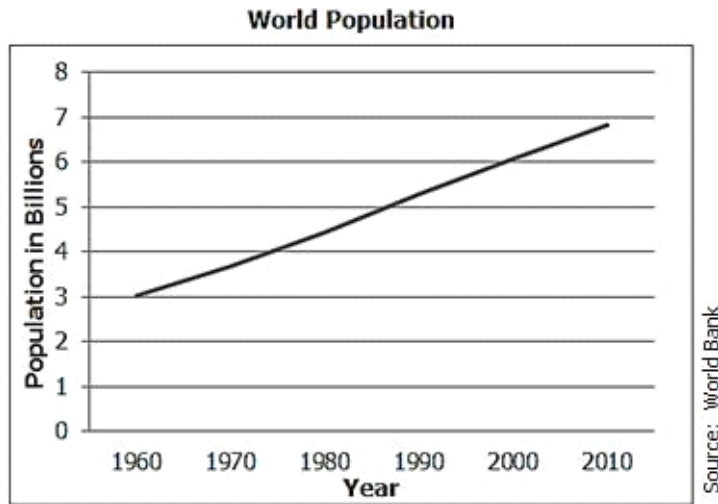
- A The Native Americans began to live like Europeans.
- B The Native American population grew from new agricultural ideas.
- C Many Native Americans migrated to Europe.
- D Many Native Americans died from diseases brought over by Europeans.



14 Which of these pull factors had the **GREATEST** effect on westward migration in the United States during the mid-1800s?

- A religious freedom
- B factory jobs
- C political freedom
- D free land

15



Which of the following statements best supports the graph?

- A Policies restricting the number of children have increased.
- B Access to modern medicine has increased in many regions.
- C The infant mortality rate has increased in most industrialized countries.
- D War and disease have increased death rates in industrialized countries.

16 Which of the following is **NOT** an indicator of standards of living?

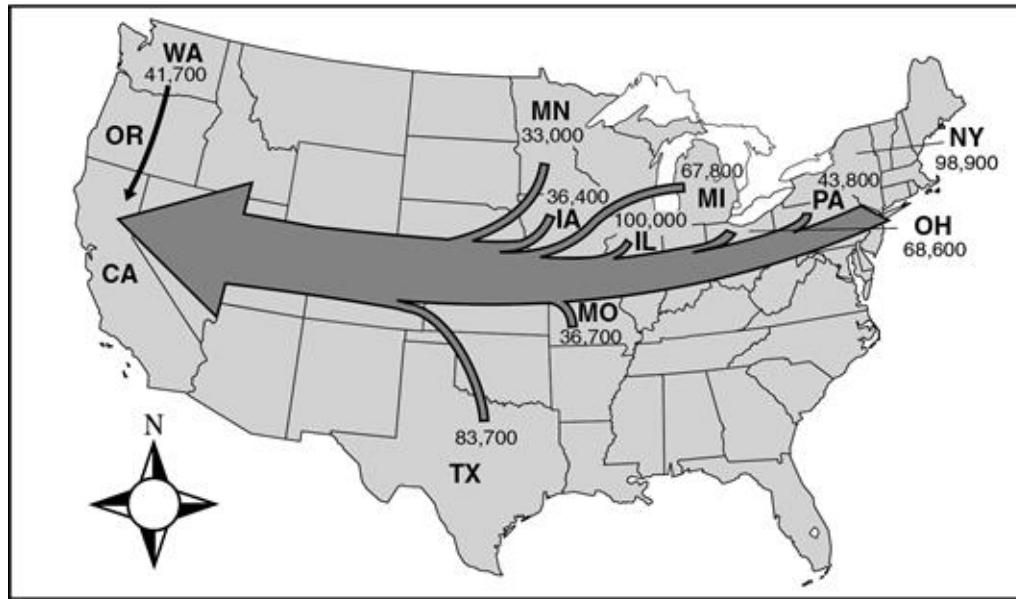
- A Population age distribution
- B Infant mortality
- C Literacy rate
- D Cultural heritage

17 A **MAIN** purpose of the levee system found in New Orleans is to

- A prevent flooding from the Mississippi River and Lake Pontchartrain.
- B contain the rising tides of the Gulf of Mexico caused by warmer temperatures.
- C lessen the erosion of the bayous and swamplands due to land development.
- D decrease potential environmental damage caused by water pollution from factories.

18 Use the map below to answer the question.

**Net Migration Between California and Other States:  
1955–1960**



Source: U.S. Census Bureau

**What resulted from the pattern shown on the map?**

- A less pollution in the Northeast
- B more available farmland in the Midwest
- C increased water consumption in the West
- D lower soil erosion rates in the South

19 Use the map below to answer the question.

The Continental United States



**Which U.S. state is NOT separated from Canada by a natural border?**

- A Michigan
- B Ohio
- C North Dakota
- D Pennsylvania

20 Use the map below to answer the question.

### World Oil Chokepoints for Maritime Transit of Oil



Key	
●	Chokepoint

Source: U.S. Energy Information Administration

**What other piece of information is needed to determine the MOST influential oil transportation chokepoint?**

- A the volume of oil transported through each chokepoint
- B the destinations of the oil transported through the chokepoints
- C the type of governments that have access to the chokepoints
- D the number of military ships that navigate through each chokepoint

21 **European cities like Rome, Paris, and London became major economic and population centers because they were founded along or near**

- A mountains.
- B rivers.
- C natural sea ports.
- D dry climate regions.

22 Use the list below to answer the question.

### Pre-Columbian Inca Empire

- Farmers developed terraced agriculture to produce food surpluses.
- Builders constructed roads to connect the territories of the empire.

The activities on this list were a result of which physical feature?

- A deep harbors along the east coast of South America
- B rain forest regions in the northern interior of South America
- C large areas of grasslands in the southern regions of South America
- D major mountain ranges through the western areas of South America

23

Look at the map.



What was the purpose behind the feature identified by the arrow on the map?

- A To provide a popular fur trading route for settlers and American Indians in the region
- B To provide a quicker water route for transporting goods from the Atlantic to the center of America
- C To provide the beginnings of a road system in an era where new means of transportation were being built
- D To provide a railroad route that transported goods more quickly from the U.S. to Canada

24 Which statement is the MOST accurate assessment of the effect of multiculturalism in Quebec, Canada?

- A Racial diversity has made Quebec a major destination for immigrants.
- B The quality of its universities has made Quebec attractive to technology corporations.
- C Cultural differences have weakened Canada's political ties to the United States.
- D The diversity of languages has strengthened Canada's cultural ties to Europe.

25 Use the table below to answer the question.

Aztec Farming	Inca Farming
Dredged marshes to build raised mounds in lakes	?

Which **BEST** completes the comparison table?

- A Flooded fields along riverbanks
- B Cleared meadows in forested areas
- C Carved terraces into mountainsides
- D Established plantations on grasslands